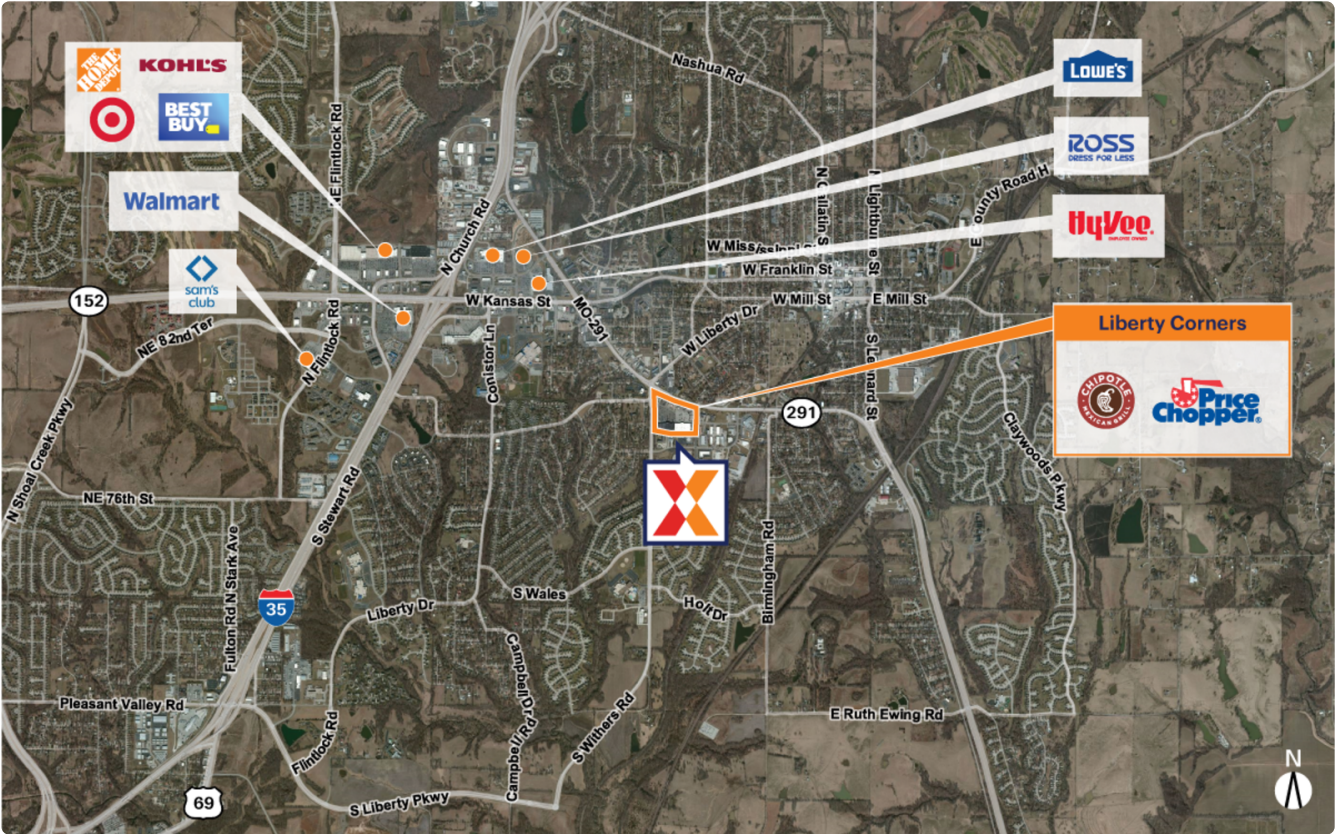


# Liberty Corners

Clay County   Kansas City, MO-KS   124,808 Sq Ft

840-916 South 291 Highway | Liberty, MO 64068

39.2364, -94.4350



Demographics	1 Mile	3 Miles	5 Miles
Population	9,666	47,327	78,917
Daytime Pop.	15,122	48,943	75,659
Households	3,889	17,735	29,121
Income	\$104,607	\$135,147	\$134,502

Source: Synergos Technologies, Inc. 2024

- Anchored by a 56K Sq Ft Price Chopper, with a strong tenant mix of personal services and restaurants including Chipotle Mexican Grill & The Big Biscuit
- Surrounded by an affluent and highly educated population, with an average household income of \$123K+ and 42% holding a college degree within 3 miles
- Dense daytime population of 48K+ within 3 miles
- Located 1.2 miles from the major retail node of Liberty Triangle, with high visibility from 15K+ vehicles daily on State Hwy 291 (Kalibrate 2019)
- Demonstrated tenant stability, with more than 35% of tenants leasing their space for 11+ years

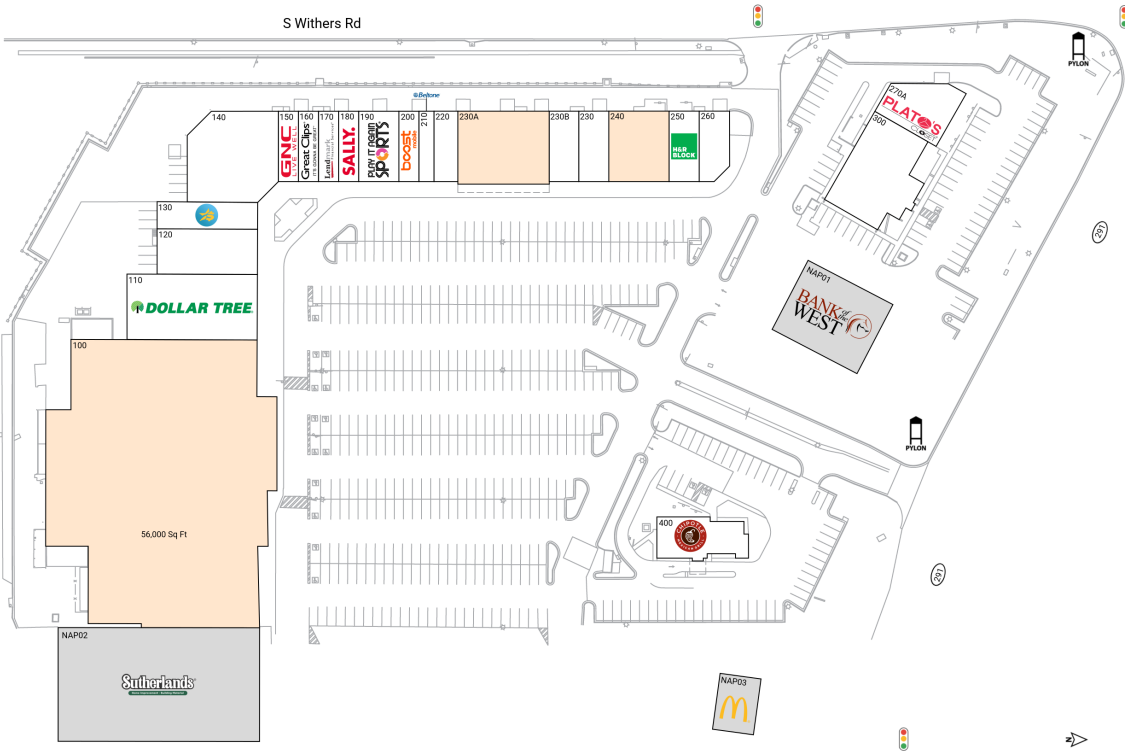


# Liberty Corners

840-916 South 291 Highway | Liberty, MO 64068

Clay County Kansas City, MO-KS 124,808 Sq Ft

39.2364, -94.4350



## Available Spaces

100	56,000 Sq Ft	240	4,200 Sq Ft	360°
230A	6,570 Sq Ft			360°

## Current Tenants

Space size listed in square feet

110	Dollar Tree	8,450
120	Bins & Deals	4,500
130	Advance America	2,700
140	Lift Kansas City	7,800
150	GNC	1,400
160	Great Clips	1,400
170	Lendmark Financial Services	1,400
180	Sally Beauty Supply	1,400
190	Play It Again Sports	2,800
200	Boost Mobile	1,400
210	Beltone	1,050
220	Design Nails and Spa	1,750
230	Clean Laundry	2,100
230B	Liberty Smoke Shop and Cigars	2,100
250	H&R Block	2,100
260	Biscari Brothers Bicycles	1,950
270A	Plato's Closet	3,576
300	The Big Biscuit	6,736
400	Chipotle Mexican Grill	3,426
NAP01	Bank of the West	0
NAP02	Sutherlands	0
NAP03	McDonald's	0

This site plan is for illustrative and information purposes only, showing the general layout of the shopping center; and is not a legal survey. Brixmor makes no representation or warranty that the shopping center is exactly as depicted as site conditions and tenant mix are subject to change over time.

4145

